

5257 Aspen Crescent,
West Vancouver, BC



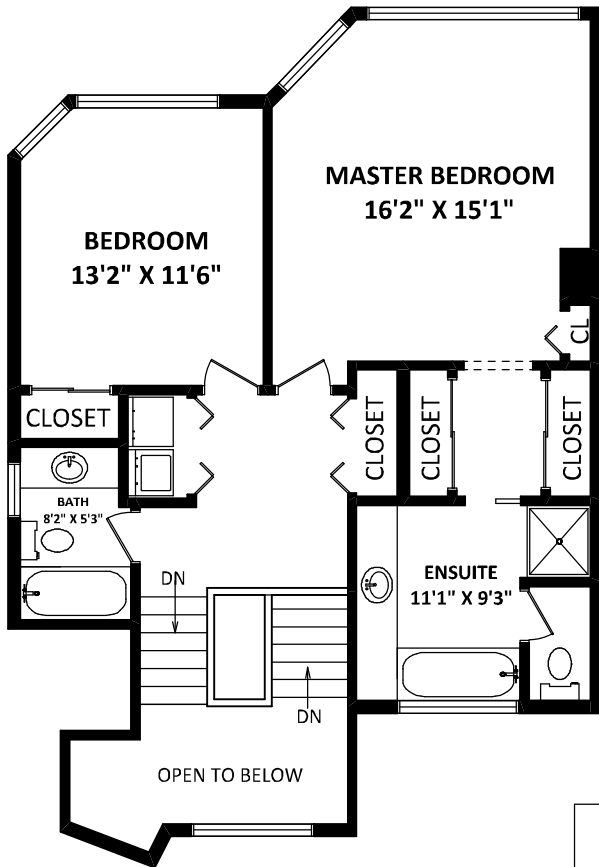
PHIL LeGREE

RE/MAX Masters Realty

Cell: 604-518-1644

plegree@gmail.com

www.phillegree.com

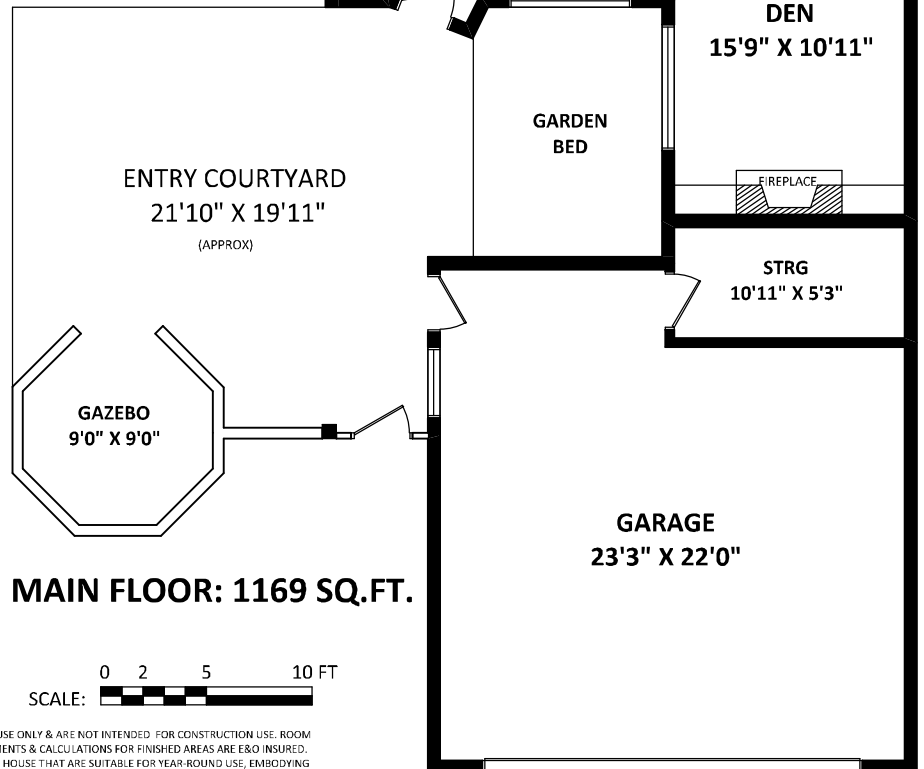


UPPER FLOOR: 818 SQ.FT.

TOTAL USABLE AREA: 1987 SQ. FT.

NOT INCLUDED AREAS

GARAGE:	572 SQ. FT.
PATIO:	355 SQ. FT.
ENTRY COURTYARD:	468 SQ. FT.
(INCL. GAZEBO)	



MAIN FLOOR: 1169 SQ.FT.



GENERAL NOTES:
1. MEASUREMENTS ARE FOR PROMOTIONAL USE ONLY & ARE NOT INTENDED FOR CONSTRUCTION USE. ROOM DIMENSIONS ARE APPROXIMATE. MEASUREMENTS & CALCULATIONS FOR FINISHED AREAS ARE E&O INSURED.
2. FINISHED AREAS ARE ENCLOSED AREAS IN A HOUSE THAT ARE SUITABLE FOR YEAR-ROUND USE, EMBODYING WALLS, FLOORS, AND CEILINGS THAT ARE SIMILAR TO THE REST OF THE HOUSE. (ANSI Z765-2003)
3. THIS FLOOR PLAN MAY ONLY BE REPRODUCED WITH PERMISSION OF THE REALTOR(S) ON THIS FLOOR PLAN.
* ANY MEASUREMENT WITH AN ASTERISK (*) OR (APPROX) ARE APPROXIMATE AND FOR ILLUSTRATION PURPOSES ONLY AND ARE NOT E&O INSURED.

